



A SENSE
OF
PLACE

PHILADELPHIA ARTALLIANCE

contemporary craft & design

251 South 18 Street Philadelphia PA 19103

T: 215.545.4302 F: 215.545.0767

www.philartalliance.org

FEBRUARY 2 TO APRIL 21, 2012

PUBLIC RECEPTION:

THURSDAY, FEBRUARY 2, 5:30 TO 7:30 PM

A SENSE OF PLACE

MARIAN BEJLINGA

MARCIA DOCTER

PAT HICKMAN

KE-SOOK LEE

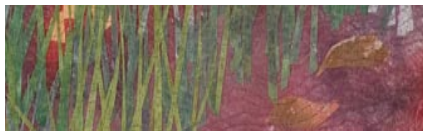
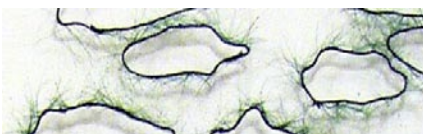
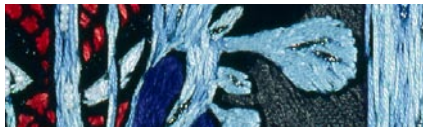
AMY ORR

WENDEANNE KE'AKA STITT

BARBARA LEE SMITH

BHAKTI ZIEK

CURATED BY BRUCE HOFFMAN



THURSDAY, FEBRUARY 2, 5 PM
GALLERY WALKTHROUGH

FRIDAY, FEBRUARY 3, 12:30 PM
BROWN BAG LUNCH & DISCUSSION

Guest Curator Bruce Hoffman and artists
Patricia Hickman, Amy Orr, Barbara Smith,
Wendeanne Ke'Aka Stitt, and Bhakti Ziek.

TUESDAY, FEBRUARY 21, 3:30 PM

Gallery Walkthrough with
PAA curator Sarah Archer

Gallery Hours: Tuesday through Sunday: 11 am to 5 pm
Group tours available upon request or by appointment
Admission Fee: \$5 for adults; \$3 for students and seniors.
Pay what you wish on Fridays.

Support provided by Joan and Steven Dreyer,
The McGraw-Hill Companies, Inc., the Independence
Foundation, Pennsylvania Council on the Arts,
and Members of the PAA.

Image, opposite side: Ke-Sook Lee, *Green Hammock*, 2010; Recycled
army nurses uniforms, thread, mixed media. Images, this side, top to
bottom: Marcia Docter, *Sum Sum Sunt Subaqua Subaqua Maledizre
Temp Tant*, 1996; Linen, cotton thread; Collection of the Racine Museum
of Art, Racine, WI. Marian Bejlinga, *Waterland*, 2004; Textile- Paper yarn,
Horsehair, Stitched. Pat Hickman, *River Teeth*, 2011; Mixed materials
(wood, gut, pins for mounting insects). Amy Orr, *House of Cards*, 2012;
Plastic, wood, paper. Barbara Lee Smith, *Marshland/Twilight*, 2010;
Painted, collaged, stitched textile. Wendeanne Ke'aka Stitt, *Niho-Mano*,
2009; Traditional Ka'pa cloth made from mulberry tree, block print,
immersion dye, painting, overlay and cord snapping. Bhakti Ziek, *Nomad*,
2010; Handwoven welf-backed jacquard.